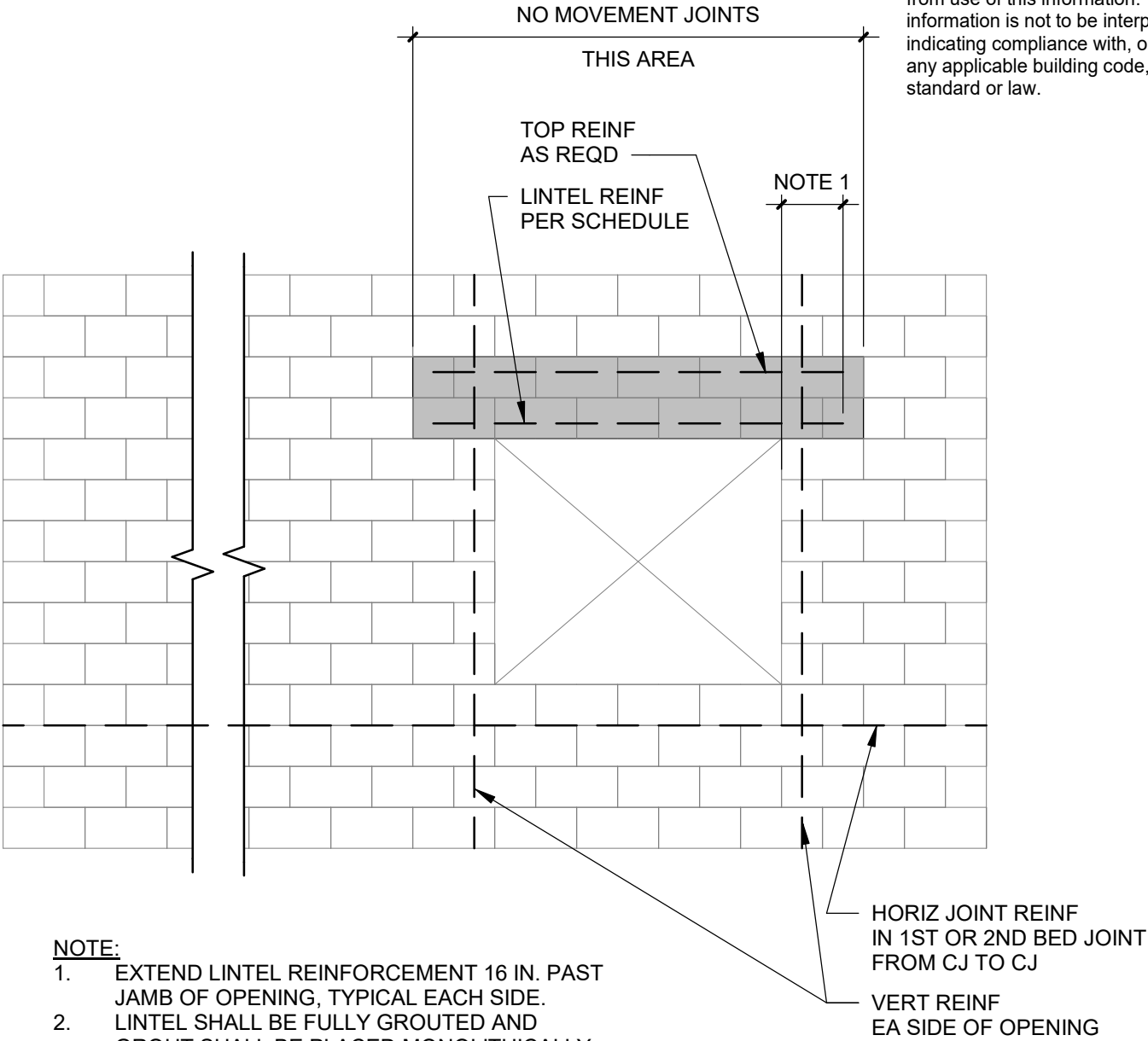
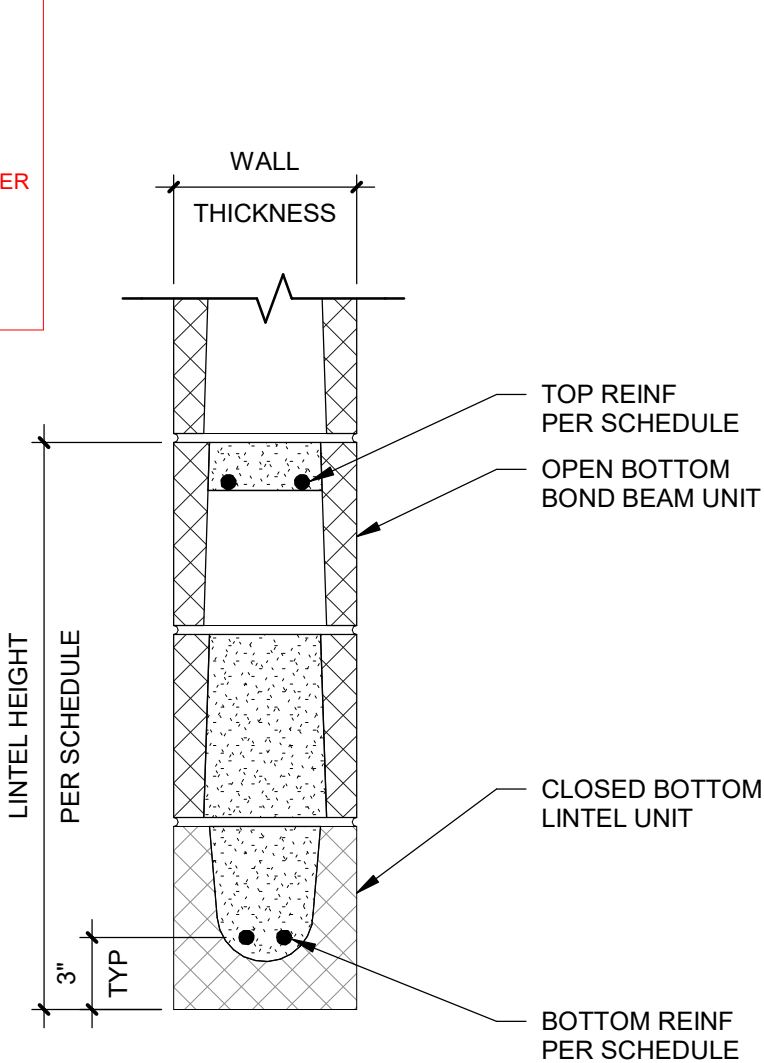


DISCLAIMER: The Block Design Collective ("BDC") does not make any representations or warranties with respect to the accuracy or suitability of this information, and persons making use of this information do so at their own risk. BDC disclaims liability for damages of any kind, including any special, indirect, or consequential damages, which may result from use of this information. This information is not to be interpreted as indicating compliance with, or waiver of, any applicable building code, ordinance, standard or law.

DESIGNER NOTES:

- DESIGNER NOTES:
- LINTEL SPANS BASED ON THE FOLLOWING:
    - FACTORED UNIFORM LOAD OF 1,500 LB/FT
    - TYPE S MASONRY CEMENT MORTAR
    - $f_m = 2000$  PSI
    - NORMAL WEIGHT UNITS (DENSITY = 135 PCF)
    - 8" BEARING ON EACH JAMB
  - EVEN IF TOP REINFORCING BARS ARE NOT REQUIRED, IT IS RECOMMENDED TO USE AN OPEN BOTTOM BOND BEAM UNIT TO FACILITATE GROUT FLOW.
  - LINTEL BLOCK SIZES VARY. VERIFY DIMENSIONS WITH BLOCK PRODUCER OR CONTACT BDC FOR MORE INFORMATION.
  - LINTEL SHALL BE FULLY GROUTED. GROUT SHALL BE PLACED MONOLITHICALLY WITH NO COLD JOINTS.
  - GROUT CLEARANCE FROM BAR TO UNIT IS SPECIFIED IN TMS 402-16 SECTION 6.1.3.5 AS THE MINIMUM OF:
    - 1/4" - FINE GROUT
    - 1/2" - COARSE GROUT
  - MAXIMUM BAR SIZE IS SPECIFIED IN TMS 402-16 AS FOLLOWS:
    - #11 (SECTION 6.1.2.1)
    - STRENGTH DESIGN - #9 (SECTION 9.3.3.1)
  - VERIFY GROUT CLEARANCE FOR BAR SIZES GREATER THAN #7.
  - CLEAR COVER IS SPECIFIED IN TMS 402-16 SECTION 6.1.4 AS FOLLOWS:
    - MASONRY EXPOSED TO EARTH OR WEATHER
      - 1 1/2" FOR #5 AND LESS
      - 2" FOR GREATER THAN #5
    - 1 1/2" FOR MASONRY NOT EXPOSED TO EARTH OR WEATHER
  - FOR STRENGTH DESIGN, TMS 402-16 SECTION 9.3.3.3 REQUIRES THAT BARS SHALL NOT BE BUNDLED.
  - CLEAR DISTANCE BETWEEN BARS IS SPECIFIED IN TMS 402-16 SECTION 6.1.3 AS NOT LESS THAN THE BAR DIAMETER, NOR 1".

MAXIMUM LINTEL SPAN (NON-STRUCTURAL WALL)					
HEIGHT (IN)	WALL THK (IN)	BOTT REINF	TOP REINF	BEARING (IN)	MAX SPAN
8	8/12	(1) #5	-	8	4'-8"
16	8/12	(2) #5	-	8	11'-4"
24	8/12	(2) #5	-	8	15'-4"
32	8/12	(2) #5	-	8	18'-0"



- NOTE:
- EXTEND LINTEL REINFORCEMENT 16 IN. PAST JAMB OF OPENING, TYPICAL EACH SIDE.
  - LINTEL SHALL BE FULLY GROUTED AND GROUT SHALL BE PLACED MONOLITHICALLY WITH NO COLD JOINTS.